

Masters Landing

TOWNHOMES

The Carolina

3 bedrooms, den, 3 baths, powder room, entry foyer, living/dining room, kitchen, laundry room, fairway level club room, craft room and two car garage.

Total Heated Living Area
2,995 square feet

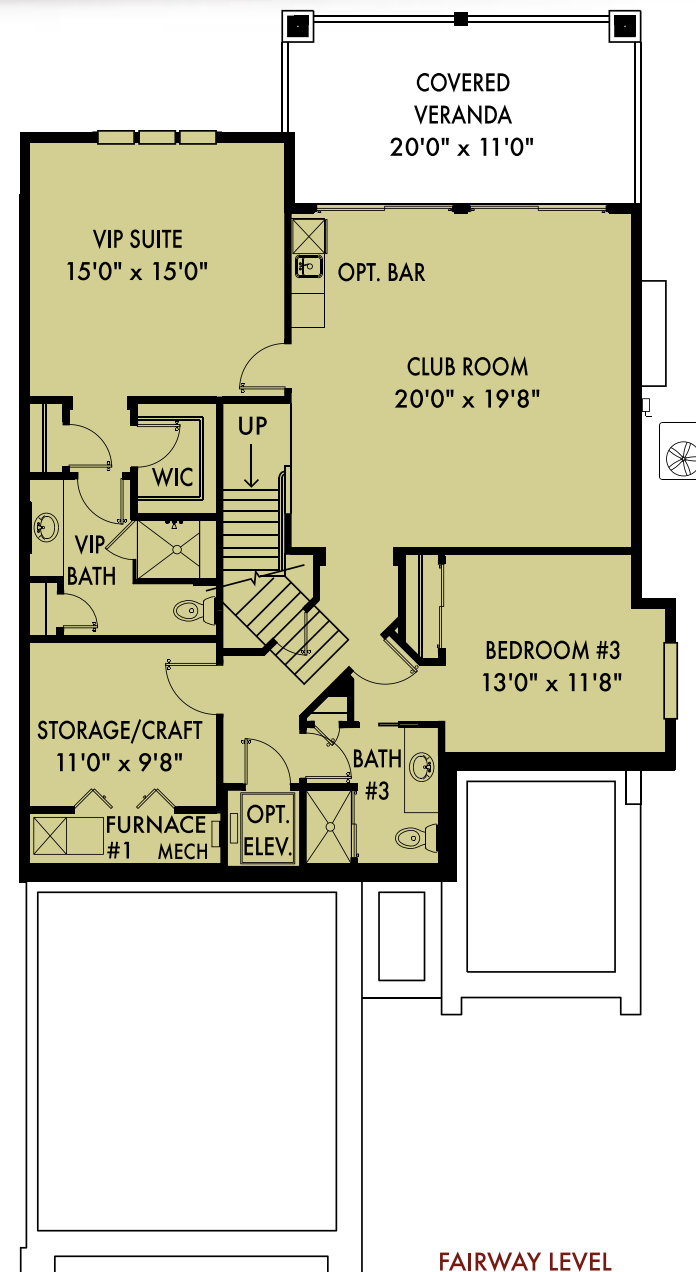
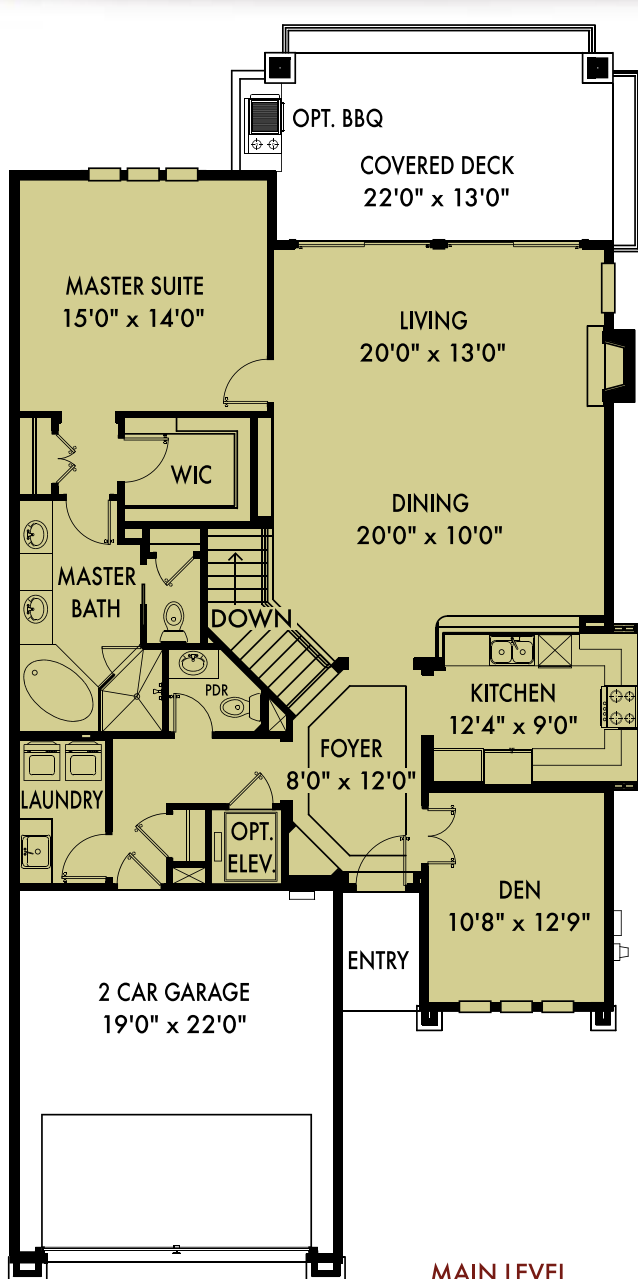
Garage Area
449 square feet

Covered Porches
574 square feet

TOTAL UNDER ROOF
4,018 square feet



Dimensions and features are subject to change without notice.



HOME FEATURES

INTERIOR

- Hardwood flooring in foyer, gallery and kitchen.
- Plush carpeting in living room, dining room, club/media room, on stairs and in all bedrooms.
- Vaulted ceilings in living room, dining room, kitchen and porch.
- 10' flat volume ceilings on remainder of main level.
- 9' flat volume ceilings on lower level.
- 8' high exterior doors.
- Paneled solid core interior doors.
- Lever door hardware throughout.
- Oversized baseboard, door and window casing.
- Prewired for telephone and cable television.
- Generous recessed lighting package.
- Luxury guest suites with private baths and spacious closets.
- Wood burning or vented gas fireplace in living room with stone surround.
- Complete electrical fixture package.
- Provisions for optional elevator.

BATHROOMS

- Extra tall vanities in baths.
- Cultured marble vanity tops with integral bowls.
- Pedestal lavatory in powder room.
- Imported stone or ceramic tile floors and shower walls in baths.
- Garden tub in master bath.
- Total Kohler® plumbing fixture package.
- Elongated water closets throughout.
- Mirror the full length of vanities.

KITCHEN

- Gourmet appliance package to include:
- Side-by-side refrigerator with ice and water in door.
- Slide-in range with self-cleaning oven and glass cooktop.
- Microwave hood combination over range.
- Ultra quiet dishwasher.
- Kohler® under-mount stainless steel kitchen sink with faucet and garbage disposal.
- Wood-paneled cabinetry with crown molding, lazy susan and pull out trash bin.
- Granite kitchen countertops.

EXTERIOR

- Andersen® clad casement windows and sliding glass doors with high-performance, low E insulated glass.
- Oversized 8' high glass or wood front door.
- 2" X 6" exterior wall construction with cement fiberboard siding.
- Two-car garage with automatic garage door opener and insulated steel panel door.
- Large covered decks on main and lower levels.
- Architectural roof shingles.
- Professionally designed landscaping

ENERGY SAVING AND QUALITY CONSTRUCTION FEATURES

- High-efficiency electric heat pump system.
- High efficiency electric water heater.
- Ceiling fan outlets in all bedrooms, grand room and porch.
- High-performance, low E insulated glass in windows and sliding glass doors.
- Fiberglass insulation: R-38 ceiling, R-19 exterior walls.
- Sealing/Caulking for low air infiltration.
- Air conditioning vents in all walk-in closets and baths.
- Photocell safety monitor on garage doors.
- One-year warranty on all material and workmanship.

The Carolina

3 BEDROOMS, DEN, 3 BATHS, POWDER ROOM, ENTRY
FOYER, LIVING/DINING ROOM, KITCHEN, LAUNDRY ROOM,
FAIRWAY LEVEL CLUB ROOM, CRAFT ROOM
AND 2 CAR GARAGE.

