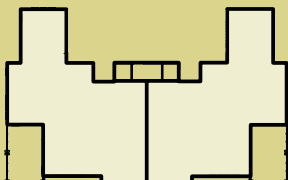


Persimmon Point

PLAN 1 • 2 BEDROOMS • 1,614* SQ FT



MAGGIE VALLEY
CLUB



Interior	1,417 SQ FT
Exterior	197 SQ FT
*TOTAL	1,614 SQ FT

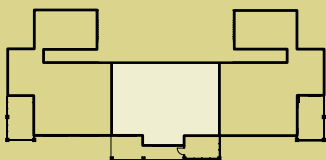
All square foot measurements are approximate and subject to change. These concepts and features listed are derived from discussions in the early stages of design and are subject to change without notice. Developer reserves the right to make modifications.

Persimmon Point

PLAN 2 • 2 BEDROOMS • 1,627* SQ FT



MAGGIE VALLEY
CLUB



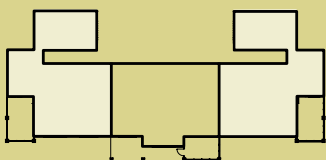
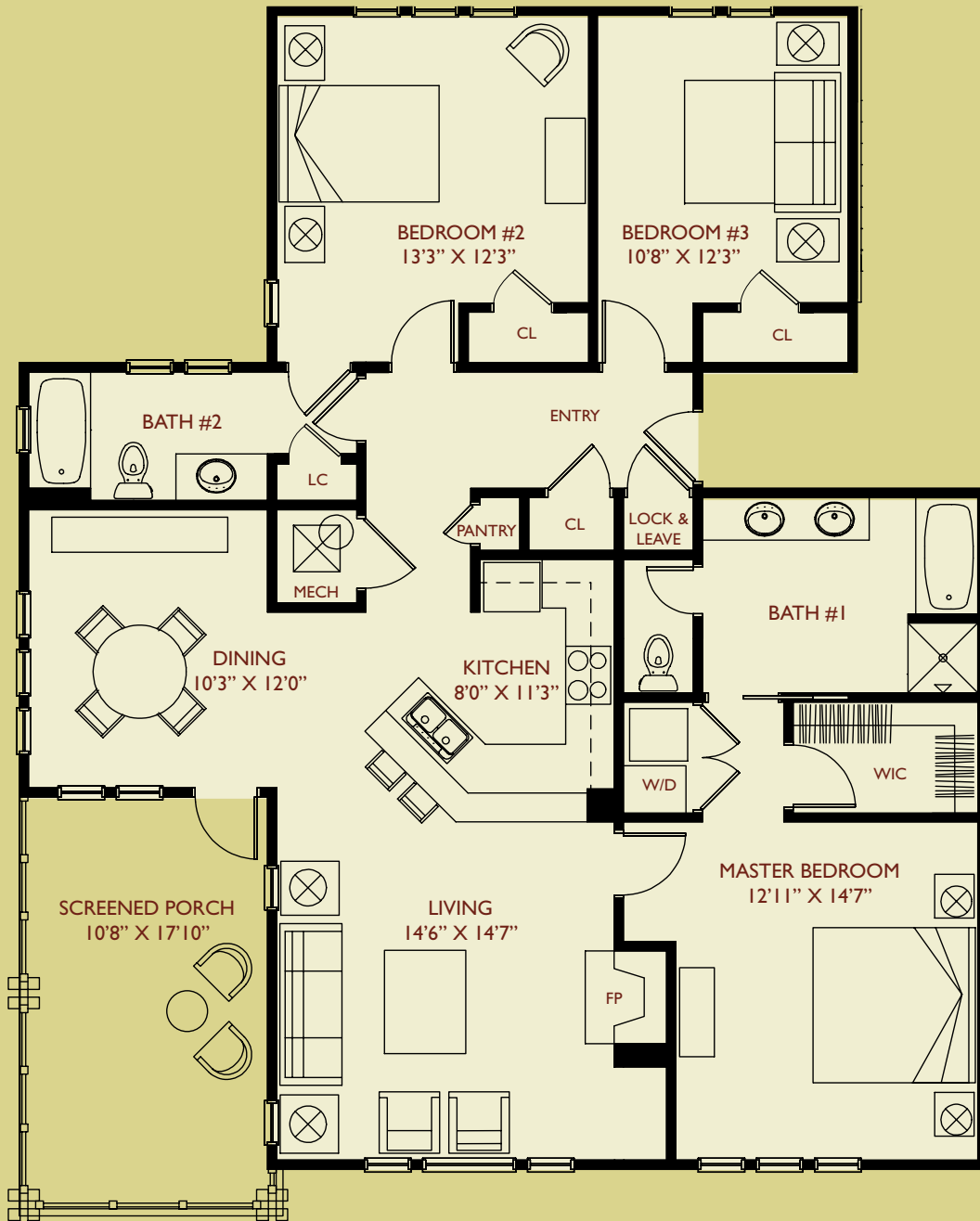
Interior	1,310 SQ FT
Exterior	317 SQ FT
*TOTAL	1,627 SQ FT

Persimmon Point

PLAN 3 • 3 BEDROOMS • 1,793* SQ FT



MAGGIE VALLEY
CLUB



Interior	1,596 SQ FT
Exterior	197 SQ FT
*TOTAL	1,793 SQ FT

All square foot measurements are approximate and subject to change. These concepts and features listed are derived from discussions in the early stages of design and are subject to change without notice. Developer reserves the right to make modifications.